

EXHIBITORS – Stand Number

STAND NO.	COMPANY NAME		STAND NO.	COMPANY NAME
1	Mobility Hire		25	Stealth Products
3	RESMaG		26	Active Design
4	Active Hands		27	Recare
6	Permobil		28	ETAC
7	Spex		30	LCS Ltd
8	Chunc		32	Enable Design
11	Ottobock		33	BES Healthcare
12	Quantum Rehab		34	Gel Ovations
13	Consolor		36	Vermeiren
15	Lewis Reed WAV		38	Sunrise Medical
16	Dynamic Europe		40	Go Kids Go
18	HomeBraceGermany		41	Ethitec
19	Remap		42	Tendercare
21	Karma Mobility		43	Soft Options
22	RMS		44	Loopwheels
23	FormAlign		45	TACT
24	Specialised Orthotic Services		46	RHealthcare

EXHIBITORS – A to Z

STAND NO.	COMPANY NAME		STAND NO.	COMPANY NAME
26	Active Design		1	Mobility Hire
4	Active Hands		11	Ottobock
33	BES Healthcare		6	Permobil
8	Chunc		12	Quantum Rehab
13	Consolor		27	Recare
16	Dynamic Europe		19	Remap
32	Enable Design		3	RESMaG
28	ETAC		46	RHealthcare
41	Ethitec		22	RMS
23	FormAlign		43	Soft Options
34	Gel Ovations		24	Specialised Orthotic Services
40	Go Kids Go		7	Spex
18	HomeBraceGermany		25	Stealth Products
21	Karma Mobility		38	Sunrise Medical
30	LCS Ltd		45	TACT
15	Lewis Reed WAV		42	Tendercare
44	Loopwheels		36	Vermeiren

Exhibition Hall 3

Go Kids Go Zone

Go Kids Go have been providing training to training for young wheelchair users and healthcare professionals across the UK and Ireland since 1990. The sessions at PMG will give the practitioner a chance to experience some of the challenges faced by wheelchair-using clients and to practise wheelchair skills techniques for overcoming these challenges. There will be a strong focus on how to teach these techniques to younger clients. The sessions will include learning key skills such as back wheel balancing and an introduction to wheelchair sports and dance.

Learning Outcomes:

- Recognising the key differences of various types of wheelchairs (for example; rigid frame vs folding frame)
- Recognising how the setup of a wheelchair impacts on the user's experience
- Understanding back-wheel balancing techniques
- Be able to demonstrate techniques for ascending and descending Kerbs in a wheelchair
- Recognising how wheelchair games, sports and dance can help to encourage independent mobility in both manual and powered wheelchairs.
- Be able to differentiate activities to suit the needs of the client group.

Boccia

Have a go at Boccia!

Boccia is a precision ball sport, similar to bowls, designed specifically for athletes with physical disabilities affecting motor skills. Played indoors on a similar size to a badminton court. It's a game of strategy, skill, and accuracy, where players aim to land their leather balls closest to a white "jack" ball. Boccia is inclusive, accessible, and highly competitive, featured in the Paralympic Games.

Boccia England is the national governing body for the sport in England. Its mission is to promote, develop, and support boccia from grassroots to elite levels. Through competitions, coaching, and club development, Boccia England empowers individuals of all abilities to participate and excel. The organisation champions inclusion, offering a supportive community and pathways for all players, whether playing for fun or aspiring to represent their country. Boccia England is transforming lives through sport, and we believe that it is the most inclusive sport in the world!

ACTIVE DESIGN LTD

Stand 26

Active Design Ltd
Unit 1 Holford Way
Witton
Birmingham
B6 7AX

0121 326 7506
sales@activedesign.co.uk
www.activedesign.co.uk



Active Design Ltd. is a UK-based manufacturer specialising in custom moulded and modular wheelchair seating solutions. Our CAPS II, Fusion, and MAPS systems are trusted by NHS wheelchair services and mobility specialists across the country, offering reliable support, adaptability, and clinical performance. We also supply a wide range of universal accessories, including the popular Neo wheelbase, headrests, footplates, harnesses, and lap straps. Backed by a nationwide team of engineers and in-house production, we prioritise sustainability through remouldable seating systems and long-life components designed for reuse, refurbishment, and evolving user needs.

ACTIVE HANDS

Stand 4

The Active Hands Company Limited
Unit 4 Rumbush Farm Business Park
322A Rumbush Lane
Earlswood
Solihull B94 5LW

01564 702255
info@activehands.com
www.activehands.com



Active Hands design and source products for people with reduced hand function, including those who have a Spinal Cord Injury, Cerebral Palsy, Brain Injury and Stroke survivors.

Our line of lap belts, Soloc, is specially designed for those who cannot independently fasten and release an ordinary lap belt. Each Soloc belt features the unique magnetically-aided buckle, which is easy to fasten and release even with reduced hand function. They are all tested to ISO 16840-3 and 16840-10.

BES HEALTHCARE

Stand 33



BES Healthcare Ltd
131 South Liberty Lane
Ashton Vale
Bristol
BS3 2SZ

01179 666 761
info@beshealthcare.net
www.beshealthcare.net



B | E | S
HEALTHCARE

Supporting your needs

Established for over 30 years, BES Healthcare distributes to the UK best-in-class solutions from around the world, along with the provision of education and training. BES continues to share its newest, most innovative products, including: Epic Seating System, a new range of backs from Symmetric Designs, and NEST cushion technology.

The Epic Seating System, with its anatomical pivot point, is a revolutionary new way of looking at seating and postural management. Symmetric Designs wheelchair backs enable configurable, modular capabilities. NEST cushions are made from an innovative material that not only possesses pressure relieving qualities, but can be decontamination time and time again, offering a sustainable alternative to foam.

CHUNC

Stand 8

Chunc Posture and Mobility
Unit 416 Tarsmill Court
Rotherwas Industrial Estate
Hereford
HR2 6JZ

01432 377512
info@chunc.co.uk
www.chunc.com



Engineered for clients with moderate to complex postural needs, our modular wheelchair systems support optimal alignment, functional mobility, and full participation at home, school, and in the community.

Offering **10+ years** of adjustability with regular maintenance, our products evolve with the user—designed for comfort, meet therapeutic goals and adapting to changing needs

Try before you buy: 2-week, no-obligation loan for clinical justification and real-life testing to ensure a functional fit for daily needs

Precision-built in Herefordshire, every system shipped within **10 working days** to support efficient care planning. Sustainable, durable, and outcomes-driven — that's **#theChuncWay**

Enable functional movement. Support meaningful participation. Deliver measurable independence.

CONSOLOR

Stand 13



Consolor Ltd
Calmore Industrial Park
Nutsey Lane
Totton
SO40 3XJ



01202 827650
admin@consolor.co.uk
consolor.co.uk

Consolor offers an extensive range of specialist seating and mobility systems across the UK, placing the safety, comfort and quality of our clients' lives at the heart of everything we do.

Our team of highly skilled and dedicated clinical seating specialists, provide posture, seating and mobility assessments to Wheelchair Service clients and private individuals across the nation. Offering expertly tailored advice on the most appropriate solution to meet each client's specific needs.

This year we'll be showcasing our wide range of Kids & Teens products, including our new range of MyWam buggies!

DYNAMIC EUROPE

Stand 16

Dynamic Europe Ltd
Unit 7 Finepoint Way
Kidderminster
Worcestershire
DY11 7FB

LiNX™



01562 826600
eucustomerservice@dynamiccontrols.com
www.dynamiccontrols.com

Smarter Seating Starts with LiNX: Precision, Comfort, and Control

Dynamic Controls' LiNX system redefines power chair seating with responsive controls, intuitive interfaces, and modular design. Built for seating specialists, it enables precise posture management and easy customisation to support user comfort and independence. LiNX Sit Smarter integrates seamlessly with existing setups and allows for future upgrades. Durable materials and simple diagnostics ensure reliability in clinical settings, while reduced training time and streamlined setup improve efficiency.

ENABLE DESIGN

Stand 32

Enable Design Ltd
Unit 3 Wharfside
Oldbury
West Midlands
B69 2BU

07914 478979
anil@enabledesign.co.uk
www.trixiseating.com

**enable
design**

Enable Design will be showcasing the patented Trixi Seating System and our new Pixi range. Trixi is a modular, crash-tested wheelchair seating system designed for complex postural needs. It features an adjustable seat base with a contoured, configurable ischial well, a pressure-relieving cushion, and a modular back support with targeted trunk and pelvic supports. Pixi builds on this foundation, offering a streamlined, cost-effective solution tailored for NHS wheelchair services. Both systems reflect our commitment to clinically effective, user-focused design that enhances comfort, function, and independence.

Visit our stand to learn more.

ETAC

Stand 28



Etac Ltd
Unit 60 Hartlebury Trading Estate
Hartlebury
Kidderminster
Worcestershire
DY10 4JB

0121 561 2222
enquiries.uk@etac.com
www.etac.com/uk

etac®
Creating Possibilities

Etac is a world-leading developer of innovative assistive devices and patient handling equipment. We offer state-of-the-art solutions for a wide range of daily needs and care settings, for people of all ages. Our products are designed to promote the individual's abilities and support their caregivers through high quality, user-friendly functionality, and great value over time.

ETHITEC

Stand 41

Ethitec
37 Millstone Lane
Leicester
LE1 5JN

0116 2470806
sales@ethitec.com
www.ethitec.com/elms2



ELMS2 is Ethitec's proven software solution for Wheelchair Services, offering comprehensive integrated functionality to manage referrals, waiting lists, appointments, assessments, purchasing, PWBs, stock, distribution, and servicing related activity. ELMS2 also offers NHS e-Referral Service accreditation, a full Electronic Patient Record, PLICS reporting, powerful Android / iOS apps (for use by clinicians, stores staff and drivers), SMS messaging, and integration opportunities.

The solution has a well-established user-base, an active user-group and very importantly, is supported by a large and highly experienced team at Ethitec who drive the software forward and strive to ensure the satisfaction of our customers.

FORMALIGN

Stand 23



FormAlign
Unit 7 Liberator House
Clopton Business Park
Woodbridge
IP13 6QT

01473 467777
sales@formalign.co.uk
www.formalign.com



Here at FormAlign we focus on postural products and component solutions. We support prescribers to achieve the best outcomes for their end users. Through close experiences and extensive networking, we have developed products focused on the needs of the industry.

We look forward to meeting you and introducing our latest additions at Stand 23.

GEL OVATIONS

Stand 34

Gel Oventions Europe Ltd
Charlton Road
Brentry
Bristol
BS10 6NF

01454 285071
james@gelovationseurope.com
www.gelovationseurope.com



Gel Oventions is a leading provider of pressure care solutions with over 20 years of experience and more than 300 products. We are committed to advancing healthcare standards and ensuring comfort and well-being through continuous research and development. Our “Keep, Improve, Save, Repeat” approach reduces the need for new equipment and minimises environmental impact and promoting sustainability.

GO KIDS GO

Stand 40

Go Kids Go
90 Wilbert Lane
Beverley
East Yorkshire
HU17 0AL

01482 887163
www.go-kids-go.org.uk



Go Kids Go run free wheelchair skills workshops for manual and powered wheelchair users across the UK and Ireland, teaching key mobility skills to enable independence. We also run training for Physiotherapists and Occupational Therapists and disability/wheelchair awareness workshops in mainstream schools. We have established annual training days in many regions and are always willing to set up new workshops wherever there is a need. TV presenter, Ade Adepitan MBE, is patron of Go Kids Go.

HOMEBRACE

Stand 18

HomeBraceGermany GmbH
Birkenweg 12
73660 Urbach
Germany

+49 7181 20741-0
info@homebrace.com
www.homebrace.com



HomeBrace
Your home at your hands

At HomeBraceGermany GmbH, the needs of the people who use our products are our top priority. Our mission is to create innovations that offer people with disabilities a better quality of life. Our solutions set new standards in the field of assistive technology and create space for greater self-determination and independence.

In this way, we actively contribute to shaping the future of inclusion. With an extensive portfolio that includes eye and head controls for power wheelchairs, environmental controls, computer input devices and communication aids, we are fully committed to our mission of significantly improving life of people with disabilities.

KARMA MOBILITY

Stand 21



Karma Mobility
Unit 6 Target Park
Shawbank Road
Redditch
B98 8YN

01527 520 468
info@karmamobility.co.uk
www.karmamobility.co.uk

karma

Karma Mobility are leading suppliers of lightweight wheelchairs and powerchairs. We have built up a strong reputation for designing unique, reliable products over the last 25 years, please come and see us at PMG to see our latest products. These include a positioning paediatric wheelchair which grows from 255mm to 355mm called the Flexx Adapt. We also have a folding adult tilt in space VIP2 wheelchair and lightweight manual Agile wheelchair for you to see.

LCS LTD

Stand 30

LCS Ltd
Unit 1
Grange Business Park
Grange, Co. Sligo
F91 E4PW

+353 71 916 3905
info@lcs.ltd
lcs.ltd

Living
Comfort
Support



LCS are a custom seating manufacturer from Ireland and are bringing the WheelAir Cushion and RESHELL to PMG. They are looking to speak with potential partners for distribution in the UK.

The award-winning WheelAir Cushion combines the revolutionary WheelAir heat & moisture control system with their new 3D printed lattice structure cushion, offering active airflow, structural support, and pressure relief via variable hardness zones.

Reshell is a modular interface shell. The only system on the market designed to accommodate both carved foam and Moulded Seat Insert (MSI) seating. Resizable, reusable and recyclable.

LEWIS REED

Stand 15

Lewis Reed (WAV) Ltd
Unit 2 Plantation Road
International Business Park
Bromborough
CH62 3QR

0151 343 5360
enquiries@lewisreedgroup.co.uk
www.lewisreedgroup.co.uk



DIFFERENT BY DESIGN®

As the UK's leading provider of Wheelchair Accessible Vehicles (WAVs), we offer bespoke petrol, diesel, and electric conversions tailored to your mobility needs. Choose from lift or ramp access, side or rear entry, and seating for up to seven plus a wheelchair user. Whether you need a compact, easy-to-use vehicle or a spacious model with extra seating, our expert team will help you find the ideal solution for comfort, safety, and accessibility.

LOOPWHEELS

Stand 44

Loopwheels
Unit 202 Boughton Industrial Estate
Boughton
Newark
NG22 9LD



01623 860909 or 07483 933470
info@loopwheels.com
<https://loopwheels.com/>

Shock-absorbing Wheelchair wheels with integral suspension, designed and made in Britain. These wheels are now proven to help reduce pain and lessen fatigue by reducing the transmission of shocks and vibration to the wheelchair user, even for manual propulsion. This is based on independent studies by the University of Pittsburgh. Vibration reduction is even more important for people using an e-bike or handcycle. In addition, we're the UK distributor for two European brands of push rims: CarboLife ergonomic push rims (Gekko, Curve etc) and Lignorim wooden push rims.

MOBILITY HIRE

Stand 1



Horizon Mobility
Mobility House
Formal Industrial Park
Tewkesbury
Gloucestershire GL20 8GY



01684 275626
ashley@mobilityhire.com, sales@mobilityhire.com
www.mobilityhire.com

Mobility Hire are the UK's No1 supplier of Rehabilitation & Mobility equipment on short or long-term hire giving you flexibility. We supply, deliver and set up equipment Nationwide normally within 48 hours, we also offer a same day service for emergency equipment. Mobility Hire have a huge inventory of stock including, Hospital Beds, Hoists, Pressure care, Moving & handling, Bathing aids, Care chairs, wheelchairs & Powered wheelchairs in sizes from Paediatric to Bariatric.

Our clients range from private individuals to the NHS, Loan/Community stores, Charities, Case Manager companies and Nursing/Care homes.

"Your clients are our priority" "From Hospital to Home"



Ottobock
32 Parsonage Rd
Englefield Green
Egham
TW20 0LD

ottobock.

01784 744900
bockuk@ottobock.com
www.ottobock.com/en-gb/home-uk

For more than 100 years, Ottobock has been developing innovative fitting solutions for people with reduced mobility. As a Human Empowerment Company, Ottobock promotes freedom of movement, quality for life and independence. With innovative power, outstanding technical solutions and services in the fields of Prosthetics, Orthotics, NeuroMobility and Patient Care, they enable people in more than 130 countries to live their lives the best possible way they want to. The company founded in 1919 is constantly setting new standards and pushing ahead with the digitalisation of the industry. Ottobock has been supporting the Paralympic Games since 1988.



Permobil UK Ltd
Unit 7 Polaris Centre
41 Brownfields
Welwyn Garden City
Hertfordshire
AL7 1AN

permobil

01484 722888
info@permobil.co.uk
www.permobil.co.uk

At Permobil we put the people who use our products first. Our purpose is to innovate for individuals; to create advanced assistive solutions that make the lives of people living with disabilities more enriching. Our dedicated teams work tirelessly to make this happen, no matter if they are designing a new wheelchair, testing seating cushions, or supporting a therapist.

Headquartered in Sweden, Permobil has over 1900 team members in more than 18 countries around the world. We are a global leader in trusted healthcare solutions for power and manual wheelchairs, seating and positioning products, and power assist.

QUANTUM REHAB

Stand 12



Quantum Rehab
32 Wedgwood Road
Bicester
Oxon
OX23 4UL

01869 324600
sales@quantumrehab.co.uk
www.quantumrehab.co.uk



Quantum Rehab® designs advanced, consumer-inspired rehab powerchairs and technologies. Our products combine clinical focus with high-performance, stylish design to support a wide range of specialised needs. We're committed to improving daily function, comfort, and quality of life.

RECARE

Stand 27



Recare
13 Lodge Road
Hanborough Business Park
Long Hanborough
Oxfordshire
OX29 8LJ

01993 880200
tim@recare.co.uk
www.recare.co.uk



Since 2008, we have been family-run and are proudly recognised as one of the most respected, mobility and rehabilitation specialists for adults and children in the UK. Our team of caring healthcare and technical professionals offer unequalled clinical and technological expertise right across the UK – focused on delivering the best outcomes for all.

Offering specialist services, Seating clinics, foam carve all modular systems. Pressure mapping service. NHS Cushion contracts Stimulite range. UK National PWB Support team working with all major Charities offering joint funding solutions.

REMAP

Stand 19

REMAP
PO BOX 976
Newport
NP20 9SL



01732 927103
data@remap.org.uk
www.remap.org.uk

REMAP is the UK's only charity providing custom-made equipment, free of charge for disabled people (where there is no suitable commercial item available to meet their needs). Every year we help an average of around 3,000 people experiencing disability, thanks in no small part to our network of 65 volunteer-run branches.

RESMAG

Stand 3

RESMAG
16 Elson Road
Fradley
Lichfield
WS13 8ZS



RESMAG

07494 869993
Paul.hewett@resmag.org.uk
resmag.org.uk

The group actively supports technicians, engineers, healthcare scientists and others working in Rehabilitation Engineering and Assistive Technology services in the UK. We welcome anyone with an interest in design, engineering, science and technology who aims to improve accessibility and inclusivity. Special interest groups focus on specific areas within this challenging and exciting field of work.



RHealthcare
Unit 25 Whistleberry Park
Hamilton
ML3 0ED

0845 146 0600
sales@rhealthcare.co.uk
www.rhealthcare.co.uk



RHealthcare's wide range of manual wheelchairs caters for the users and prescribers alike, offering solutions for fleet users, retailers and high-end prescribers. Many of the products have been designed to meet the rigorous requirements of engineers and therapists from UK Wheelchair Services. This ongoing process of continuous improvements is developed through regular feedback from engineers and therapists.

RHealthcare is a leading UK provider of Manual Wheelchair products and spares to all major NHS Wheelchair Contracts.

Please come and see our new range of products.

Rehabilitation Manufacturing Services Ltd
Thompson House
Unit 10 Styles Close
Sittingbourne
ME10 3BF

01795 477280
sales@rms-rehab.co.uk
www.rehab.co.uk



RMS Ltd is a British manufacturer with nearly 50 years of experience supplying to the NHS, trade and private individuals. We are fully committed to delivering inclusive mobility solutions that improve lives. Our nationwide coverage means our team of expert product specialists is always within reach, offering tailored service and support. We also provide free assessments to understand individual needs and recommend the most suitable solutions.

As a Class 1 medical device manufacturer with ISO 13485 certification, you can trust RMS to deliver high-quality products and exceptional service – helping you achieve greater mobility, comfort and independence.

SOFT OPTIONS

Stand 43

Soft Options (Systems) Ltd
Hub 26, Scandinavia Mills
Hunsworth Lane
Cleckheaton
BD19 4LN

01422 204500
support@softoptions.co.uk
softoptions.co.uk



Soft Options has been a trusted provider of NHS software for over 34 years, consistently collaborating with customers to deliver affordable, efficient, and effective software solutions.

Our BEST (Bringing Equipment Services Together) platform has continuously evolved to meet the ever-changing National Standards. Recent updates include enhanced clinical decision-making tools, Personal Health Budgets, CSDS, and advanced Tariff/Price & Cost Analysis features.

With the launch of Version 14, along with new browser-based functionality, electronic referrals (including self-referrals), and an upgraded Client Portal, now is the perfect time to explore the full potential of our system.

Find us at stand 43.

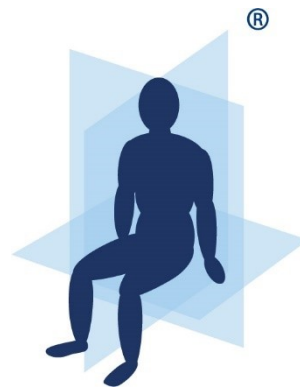
SPECIALISED ORTHOTIC SERVICES

Stand 24



Specialised Orthotic Services Ltd
Units 127-128 Fauld Industrial Park
Tutbury
Nr. Burton upon Trent
Staffordshire
DE13 9HS

01283 520400
enquiries@specialorthotic.com
drivedevilbiss.co.uk/specialised-orthotic-services



Specialised
Orthotic
Services

By *drive*

Specialised Orthotic Services is an award-winning manufacturer of specialist postural and bespoke seating solutions. We work closely with individuals, clinicians and carers, combining experience and expertise to design products that deliver practical solutions to aid mobility and daily living for clients with complex postural needs.

SPEX

Stand 7

Spex Ltd
Centrado House
Willow Road
Lakes Business Park
Fenstanton
Huntingdon PE28 9RB

07301 053965
solutions@spexseating.com
www.spexseating.com



Spex is a global innovator, manufacturer, and supplier of specialised wheelchair seating systems and accessories, committed to enhancing the lives of wheelchair users. Our seating solutions combine clinical expertise with high design standards to deliver customisable, sustainable, and adaptable support. We prioritise faster results through easy adjustments, ensuring users achieve optimal seating positions tailored to their evolving postural needs. Our mission is clear: Shaping Better Lives.

STEALTH PRODUCTS

Stand 25

Stealth Products
32 Wedgwood Road
Bicester
Oxon
OX26 4UL

01869 324600
simon@stealth-products.co.uk
www.stealthproducts.com www.quantumrehab.co.uk



Stealth Products specialises in complex rehabilitation solutions. With innovative seating, positioning and accessories tailored to its users to enhance comfort and mobility for wheelchair users.

SUNRISE MEDICAL

Stand 38



Sunrise Medical
Thorns Road
Brierley Hill
Stourbridge
DY5 2LD

0845 605 6688
enquiries@sunmed.co.uk
sunrisemedical.co.uk



At Sunrise Medical, we're driven by a passion to improve people's lives through better posture and mobility. Visit our stand to explore our latest innovations in seating, positioning, and mobility solutions across our leading brands – Quickie, JAY, Ride Designs and more. Our clinically focused products are designed to enhance comfort, support function, and promote independence. Speak to our expert team for tailored advice, live demonstrations, and insights into our evidence-based approach to postural and mobility care.

TRUSTED ASSESSING AND CARE TRAINING

Stand 45



Trusted Assessing and Care Training (TACT)
57 Upper Morin Road
Paignton
TQ3 2HX

01626 879528
info@trustedassessing.com
<https://trustedassessing.com/>



TACT is a leading national provider of training, consultancy and programmes specialising in assessing for equipment and home adaptations. An accredited provider of Trusted Assessor training, our courses are delivered by experienced OTs online and at regional venues. We offer both tailored commissioned programmes and regular open courses for smaller bookings.

In 2025 we are leading the development of a new qualification in assessing for wheelchairs and seating designed to enable a range of roles to handle simple cases and know when to refer on.

Try us out, we think you will be pleased with our refreshing approach.

TENDERCARE

Stand 42

Tendercare Ltd
Unit 10 Minster Court
Courtwick Lane
Littlehampton
BN17 7RN

01903 726161
info@tendercareltd.com
www.tendercareltd.com



Tendercare Ltd design and manufacture our own brand of special needs pushchairs and bespoke seating solutions. Additionally, we are the UK distributor for Thomas Hilfen's product range (including pushchairs and car seats) as well as a distributor of Kinetic Balance harnessing. In addition to showcasing our core product-range, we will be debuting our newest seat.

VERMEIREN

Stand 36

Vermeiren UK Ltd
Suite 1 & 2 Marshall Business Centre
Faraday Road
Hereford
HR4 9NS

07897601671
info@vermeiren.co.uk
www.vermeiren.co.uk



Vermeiren is a new name in the UK, but part of a long-established, family-owned company with decades of experience across Europe. We design and manufacture high-quality, NHS-appropriate mobility and care products at our European facilities, delivering cost-effective solutions without compromising on reliability or quality. With a dedicated UK subsidiary, we invite you to visit our booth, explore our trusted range, and discover how we can support your needs.

