

EXHIBITORS – Stand Number

STAND NO.	COMPANY NAME		STAND NO.	COMPANY NAME
2	Tendercare		25	Gel Ovations
3	Freedom One Life		26	Active Design
4	Matrix Seating		27	LCS Ltd
5	Driving Mobility		28	ETAC
6	Loopwheels		29	MHRA
9	Sumed		30	Munevo
10	Chunc		31	BES Healthcare
14	Stealth Products by Quantum Rehab		32	Soft Options
15	Winnicare		33	Permobil
16	Careflex		34	Sunrise Medical
17	RMS		41	Recare
18	British Healthcare Trades Association		42	Ethitec
19	National Wheelchair Managers Forum		43	Karma Mobility
20	Rhealthcare		44	Shonaquip
21	CoMoveIT		45	RESMAG
22	Spex		46	Greencare
23	FormAlign		47	Celtic Therapy and Rehab
24	Specialised Orthotic Services		48	Go Kids Go

EXHIBITORS – A to Z

STAND NO.	COMPANY NAME		STAND NO.	COMPANY NAME
26	Active Design		4	Matrix Seating
31	BES Healthcare		29	MHRA
18	British Healthcare Trades Association		30	Munevo
16	Careflex		19	National Wheelchair Managers Forum
47	Celtic Therapy and Rehab		33	Permobil
10	Chunc		41	Recare
21	CoMoveIT		45	RESMAG
5	Driving Mobility		20	Rhealthcare
28	ETAC		17	RMS
42	Ethitec		44	Shonaquip
23	FormAlign		32	Soft Options
3	Freedom One Life		24	Specialised Orthotic Services
25	Gel Ovations		22	Spex
48	Go Kids Go		14	Stealth Products by Quantum Rehab
46	Greencare		9	Sumed
43	Karma Mobility		34	Sunrise Medical
27	LCS Ltd		2	Tendercare
6	Loopwheels		15	Winnicare

ACTIVE DESIGN LTD

Stand 26

Active Design Ltd
Unit 1 Holford Way
Birmingham
B6 7AX

0121 326 7506
sales@activedesign.co.uk
www.activedesign.co.uk



Manufacturer of high-quality custom seating and accessories based in the Midlands. Our highly skilled engineers visit clinics nationwide. We offer custom seating ranges (CAPS II, MAPS Carved Foam, Fusion, Lynx and Matrix) and design universal accessories like footplates, headrests and harnesses. Recently merged with South West Seating, we now also produce the renowned NEO wheelbase.

BES HEALTHCARE

Stand 31



BES Healthcare Ltd
131 South Liberty Lane
Ashton Vale
Bristol
BS3 2SZ

01179 666 761
info@beshealthcare.net
www.beshealthcare.net



B | E | S
HEALTHCARE

Supporting your needs

Established for over 30 years, BES Healthcare distributes to the UK best-in-class solutions from around the world, along with the provision of education and training. This year sees BES launch three new innovative products into the UK healthcare market: the Epic Seating System, a new range of backs from Symmetric Designs, and NEST cushion technology.

The Epic Seating System, with its anatomical pivot point, is a revolutionary new way of looking at seating and postural management. Symmetric Designs wheelchair backs enable configurable, modular capabilities. NEST cushions are made from an innovative material that not only possesses pressure relieving qualities, but can be decontaminated time and time again, offering a cost-effective, sustainable alternative to foam.

BRITISH HEALTHCARE TRADES ASSOCIATION Stand 18

British Healthcare Trades Association
Tower Bridge Business Centre
46-48 East Smithfield
London
E1W 1AW

020 7702 2141
Info@bhta.com
www.bhta.com



Representing over 400 companies in healthcare and assistive technology, BHTA supports members to ensure access to the right product and service, at the right time, at the right value. All BHTA members are committed to the association's Code of Practice, requiring companies to commit to an exceptional level of service.

CAREFLEX

Stand 16



CareFlex Specialist Seating
Templer House
King Charles Business Park
Old Newton Road, Heathfield,
Newton Abbot
TQ12 6UT

0800 018 6440
info@careflex.co.uk
www.careflex.co.uk



Specialist Seating with Care,
Compassion & Empathy

Welcome to CareFlex, where our specialist seating transforms lives. We offer more than just chairs; our seating systems enhance the quality of life for individuals with mild to complex postural requirements and those with various conditions presenting postural care challenges. We tailor solutions to meet individual needs with care and empathy, ensuring optimal comfort, independence, and support. Our comprehensive approach includes thorough assessments, customised seating solutions, and educational resources to empower caregivers and clinicians. Choose CareFlex for innovative, reliable seating systems that lead to better outcomes and improved well-being for those we serve. Visit our stand to see our new chairs for 2024.

CELTIC THERAPY AND REHAB

Stand 47

Celtic Therapy and Rehab Services
19-21 Hall Street
Llanelli
Carmarthenshire
SA15 3BB



**CELTIC THERAPY
& REHAB SERVICES**
BESPOKE WHEELCHAIR & SEATING SOLUTIONS

Dean@celtictherapyandrehab.co.uk
info@celtictherapyandrehab.co.uk
celtictherapyandrehab.co.uk

We are a team of highly trained Occupational Therapists and Rehabilitation Engineers based in South Wales with over 35 years' experience of providing wheelchairs and seating in NHS, Private and Charitable sectors. We are also highly skilled at providing clinical education and training to Therapists, Suppliers, Case Managers and Wheelchair users.

Our combination of Occupational Therapist and Rehab Engineer skills ensures that the assessment, offer and excellent impartial service, and we have teamed up with the industry's best manufacturers to ensure that we can offer a range of solutions to meet the clients' needs.

CHUNC

Stand 10

Chunc Posture and Mobility
Unit 416 Tarsmill Court
Rotherwas Industrial Estate
Hereford
HR2 6JZ



01432 377512
info@chunc.co.uk
www.chunc.co.uk

Meeting moderate to complex postural seating needs: manual and activity wheelchairs for use at home, school, and outdoors. Wheelchair base frames compatible with industry-standard seating systems (moulded, matrix, or foam-carved). Additionally, support for patient rehabilitation post hip or spinal surgery, Spica rental service starting from only £95/week. This service ensures continued everyday functionality at home, school, or daycare.

Our range of wheelchairs, proudly manufactured in Herefordshire, caters to individuals aged 3 years old up to 6'2" and 110kg/17 stone. Future proof growth capability - did you know Chunc chairs are adjustable from XS to L without requiring a chair change?

CoMoveIT

Stand 21

UK distributor for CoMoveIT:

Independence Mobility
Independence House
6 Buslingthorpe Green
Leeds
LS7 2HG



0113 2628000

enquiries@independencemobility.co.uk - www.independencemobility.co.uk

info@comoveit.com - www.comoveit.com

Intelligent wheelchair steering system

Independence Mobility is a provider of mobility equipment and specialist healthcare products for adults and children. We offer a wide range of high-quality mobility products from leading manufacturers including wheelchairs, specialist seating, beds, moving and handling equipment, and more.

As UK distributor for the CoMoveIT Smart head-foot wheelchair steering system, we can offer this revolutionary technology to clinicians and their clients across the UK. The system enables users to enjoy a level of independent mobility that they have not been able to achieve before.

DRIVING MOBILITY

Stand 5

Driving Mobility
The Old Carriage Works
Moresk Road
Truro
TR1 1DG

+44 (0) 800 5593636
info@drivingmobility.org.uk
www.drivingmobility.org.uk



Driving Mobility

Driving Mobility coordinates independent driving and mobility assessment centres, providing car and other professional assessments, enabling consumers to retain and maintain their independence. We offer passenger and children's car seat, paediatric powered wheelchair loans, and mobility / wheelchair assessments working closely with Wheelchair Services, Mobility Retailers and Manufacturers. Our FREE training through our PWMS (Powered Wheelchair and Mobility Scooter) scheme, is run nationwide via our regional centres and supported by the DfT. (Department for Transport). Wheelchairs Services staff can attend these courses, arrange to visit or meet at their nearest centre, and find out more about the work we do.



Etac Ltd
Unit 60 Hartlebury Trading Estate
Hartlebury
Kidderminster
Worcestershire
DY10 4JB

0121 561 2222
enquiries.uk@etac.com
www.etac.com/uk



Etac is a world-leading developer of innovative assistive devices and patient handling equipment. We offer state-of-the-art solutions for a wide range of daily needs and care settings, for people of all ages. Our products are designed to promote the individual's abilities and support their caregivers through high quality, user-friendly functionality, and great value over time.

Ethitec
37 Millstone Lane
Leicester
LE1 5JN

0116 2470806
sales@ethitec.com
www.ethitec.com/elms2



ELMS2 is Ethitec's proven software solution for Wheelchair Services, offering comprehensive integrated functionality to manage referrals, waiting lists, appointments, assessments, purchasing, PWBs, stock, distribution, and servicing related activity. ELMS2 also offers NHS e-Referral Service accreditation, a full Electronic Patient Record, PLICS reporting, powerful Android / iOS apps (for use by clinicians, stores staff and drivers), SMS messaging, and integration opportunities.

The solution has a well-established user-base, an active user-group and very importantly, is supported by a large and highly experienced team at Ethitec who drive the software forward and strive to ensure the satisfaction of our customers.

FORMALIGN

Stand 23



FormAlign
Unit 7 Liberator House
Clopton Business Park
Woodbridge
IP13 6QT



01473 467777
hayley@formalign.co.uk
www.formalign.com

Here at FormAlign we focus on postural products and component solutions. We support prescribers to achieve the best outcomes for their end users. Through close experiences and extensive networking, we have developed products focused on the needs of the industry. We look forward to meeting you and introducing our latest additions at Stand 23.

FREEDOM ONE LIFE

Stand 3

Freedom One Life
Suite 109, Pentagon Centre
36 Washington Street
Glasgow
G3 8AZ



01412583150 / 07530716936
alex@freedomonelife.com
freedomonelife.com

Founded by a powered wheelchair user in Scotland, Freedom One Life have combined lived experience with industry-leading design to create The Series 5. Extensively tried and tested in excess of 30,000km in the real-world and certified as a medical device, the Series 5 is the only powerchair on the market with a user leading the design team.

The Series 5 delivers 40km real-world range up to 12/kmh. High-power motors, customisable profiles, low-pressure tyres and comfortable seating including tilt and lift makes driving effortless. Suitable for all accessible transport and comes with on-board charger. Medical device certified with a three-year warranty.

GEL OVATIONS

Stand 25

Gel Oventions
Charlton Road
Brentry
Bristol
BS10 6NF

44 (0) 1454 285071
info@gelovationseurope.com
www.gelovationseurope.com



Gel Oventions will be exhibiting our latest range of Pressure Care Solutions and Gel Wheelchair Accessories to assist 24-hour Pressure Care Management.

We provide solutions for Personal Care, Transfers, Travel, Leisure Activities, and for all types of Seating. With over 350 stock items and our ever popular Made to Measure Service, Gel Oventions has an extensive depth of products and knowledge to assist you in finding the right solution for your clients and service users.

This year Gel Oventions will be launching our new Dimensional Gel Plus range designed for clients with particularly bony prominences. We look forward to welcoming you to our booth.

GO KIDS GO

Stand 48

Go Kids Go
90 Wilbert Lane
Beverley
East Yorkshire
HU17 0AL



01482 887163
www.go-kids-go.org.uk

Go Kids Go run free wheelchair skills workshops for manual and powered wheelchair users across the UK and Ireland, teaching key mobility skills to enable independence. We also run training for Physiotherapists and Occupational Therapists and disability/wheelchair awareness workshops in mainstream schools. We have established annual training days in many regions and are always willing to set up new workshops wherever there is a need. TV presenter, Ade Adepitan MBE, is patron of Go Kids Go.

GREENCARE

Stand 46



Greencare Mobility
Greencare
Simcox Court
Riverside Industrial Park
Middlesbrough
TS2 1UU



01642 223322
info@greencaremobility.com
www.greencaremobility.com

Greencare is a leading provider of configurable, custom built wheelchairs and specialist seating solutions for clients. We take time to get details right ensuring accurate measurements, checking the seating position, considering the clients personal medical conditions, their immediate surroundings, and how they want to use the wheelchair. Even the smallest details are important to us and we strive to meet every demand of the patient. If you think we cannot achieve what you need, try us! You will be surprised how versatile our products are and our team love the challenge.

KARMA MOBILITY

Stand 43



Karma Mobility
Unit 6 Target Park
Shawbank Road
Redditch
B98 8YN



01527 520 468
info@karmamobility.co.uk
www.karmamobility.co.uk

Karma are a leading supplier of; lightweight, prescriptive, positioning and powered wheelchairs. All Karma products are extensively tested to ensure reliability and durability.

LCS LTD

Stand 27

LCS Ltd
Unit 1
Grange Business Park
Grange, Co. Sligo
F91 E4PW

+353 71 916 3905
info@lcs.ltd
lcs.ltd

Living
Comfort
Support



LCS are excited to bring the custom WheelAir Cushion and RESHELL to PMG, joined by exclusive NHS Clinical partner Consolor Ltd.

WheelAir Cushion combines the revolutionary WheelAir heat & moisture control system with a custom printed 3D lattice structure, offering active airflow, custom shaping with structural support, and pressure relief via variable hardness zones.

RESHELL is an interface shell for custom seating that is resizable, reusable and recyclable, offering value for money to clinics and reduced production time for the OEM.

Visit Stand 27, grab a seat and experience the WheelAir Cushion and RESHELL for yourself.

LOOPWHEELS

Stand 6

Loopwheels
Unit 202 Boughton Industrial Estate
Boughton
Newark
NG22 9LD

01623 860909
info@loopwheels.com
www.loopwheels.com



Loopwheels are rear wheels with integral suspension, for reduced jolting and increased comfort for all manual wheelchair users, and those using a power attachment. Especially helpful for people with lower back pain. We're also the UK distributor for CarboLife ergonomic push rims, including the popular Gekko and Curve Tetra-Grip options.

MATRIX SEATING

Stand 4

Matrix Seating
35 Breach Lane
Shaftesbury
Dorset
SP7 8LD



matrixseating
infinitely adjustable support

+44 (0)7396 716030 or +44 (0)1747 850022
sales@matrixseating.com
matrixseating.com

Matrix Seating provides infinitely adjustable custom seating, 24 different shapes of adjustable head supports for wheelchairs, and standalone head supports / cervical collars (also adjustable).

MHRA

Stand 29

Medicines and Healthcare products Regulatory Agency (MHRA)
10 South Colonnade
Canary Wharf
London
E14 4PU

General queries - 020 3080 6000 (9am to 5pm Monday to Friday)
MHRACustomerServices@mhra.gov.uk
yellowcard.mhra.gov.uk



The MHRA runs the Yellow Card scheme, which collects and monitors information on suspected safety concerns involving healthcare products, like a side effect with a medicine or an adverse medical device incident. The scheme relies on voluntary reporting of problems to a healthcare product by the public (including patients, parents and carer givers) as well as from healthcare professionals. The data collected helps the MHRA monitor the safety of all healthcare products in the UK to ensure they are acceptably safe for patients and users.

MUNEVO

Stand 30

Munevo GmbH
Agnes Pockels Bogen 1
80992 Munich
Germany

+49 160 3241281
jason@munevo.com
munevo.com



Munevo developed a head control for electric wheelchairs based on smart glasses, Munevo Drive. This special control helps people with SCI, MND, MS and conditions alike to achieve more independent mobility. The Munich-based company was founded in 2018 and is currently selling Munevo Drive in the United Kingdom, Ireland, Germany, Austria, Switzerland, Holland, France, Italy, Spain, Norway and the USA.

NWFM

Stand 19

National Wheelchair Managers Forum
Specialised Ability Centre, Altrincham Road
Shorston
Manchester
M22 4NY

Tel: 0161 611 3825
membership@wheelchairmanagers.org
www.wheelchairmanagers.org.uk



The Forum is a representative body for NHS commissioned wheelchair services at a national level. It provides the focus for discussion, encourages the sharing of best practice and exchange of ideas on topics relevant to wheelchair services at a local and national level.

PERMOBIL

Stand 33



Permobil UK Ltd
Unit 7 Polaris Centre
41 Brownfields
Welwyn Garden City
Hertfordshire
AL7 1AN

permobil

01484 722888
info@permobil.co.uk
www.permobil.co.uk

Permobil – Manufacturer of Powered Wheelchairs, Manual Wheelchairs and Seating & Positioning Products our brands include, Permobil, Progeo, TiLite, Panthera, ROHO, V-trak, Comfort company & EvoShape

RECARE

Stand 41



Recare
13 Lodge Road
Hanborough Business Park
Long Hanborough
Oxfordshire
OX29 8LJ

+44 (0) 1993 880200
info@recare.co.uk
www.recare.co.uk



Recare is a leading rehabilitation and equipment specialist team of highly experienced professionals dedicated to delivering positive outcomes. Its success lies in a clinical approach focusing on individual needs through a commitment to service and support. Recare supplies brands from the world's leading manufacturers and works closely with end-users and healthcare professionals.

RESMAG
16 Elson Road
Fradley
Lichfield
WS13 8ZS



RESMAG

07494 869993
Paul.hewett@resmag.org.uk
resmag.org.uk

The group actively supports technicians, engineers, healthcare scientists and others working in Rehabilitation Engineering and Assistive Technology services in the UK. We welcome anyone with an interest in design, engineering, science and technology who aims to improve accessibility and inclusivity. Special interest groups focus on specific areas within this challenging and exciting field of work.

RHealthcare
Unit 25 Whistleberry Park
Hamilton
ML3 0ED

+44 (0)845 146 0600
sales@rhealthcare.co.uk
www.rhealthcare.co.uk



RHealthcare's wide range of manual wheelchairs caters for the users and prescribers alike, offering solutions for fleet users, retailers and high-end prescribers. Many of the products have been designed to meet the rigorous requirements of engineers and therapists from UK Wheelchair Services. This ongoing process of continuous improvements is developed through regular feedback from engineers and therapists.

RHealthcare is a leading UK provider of Manual Wheelchair products and spares to all major NHS Wheelchair Contracts.

Please come and see our new range of products.

RMS

Stand 17

Rehabilitation Manufacturing Services Ltd
Thompson House
Unit 10 Styles Close
Sittingbourne
ME10 3BF

01795 477280
sales@rms-rehab.co.uk
www.rehab.co.uk



RMS are a British manufacturer with over 40 years of experience supplying to the NHS, trade, and private individuals; fully committed to creating inclusive mobility solutions for our users.

Our nationwide coverage ensures that our team of expert product specialists is always within reach, offering personalised service and support. We also provide a free assessment service to understand your specific needs and recommend the best solutions.

Simply contact us to find out how we can help you achieve greater seating mobility, as you can trust RMS to deliver quality products and exceptional service tailored to your requirements.

SHONAQUIP

Stand 44

Shonaquip Social Enterprise Company
Unit 7 & 8 Independence Square
c/o New Ottery and Strandfontein Road
Ottery
Cape Town
7800
South Africa

+27 71 705 0402
marietha@shonaquipse.org.za
www.shonaquipse.org.za



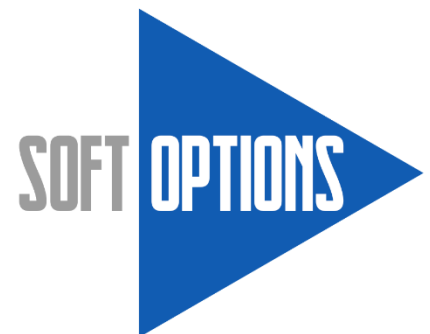
Shonaquip Social Enterprise is a Cape Town based organisation that innovatively provides certified seating solutions through their locally designed and manufactured assistive devices. These provide posture support to enhance outdoor lifestyles through modularity and clinical adjustability. The organisation also facilitates programmes on disability awareness and advocacy, inclusive education and employment.

SOFT OPTIONS

Stand 32

Soft Options (Systems) Ltd
Scandnavia Mills
Hunsworth Lane
Cleckheaton
BD19 4LN

01422 204500
support@softoptions.co.uk
softoptions.co.uk



Soft Options have been providing NHS Software for 33 years, working closely with customers to provide affordable and efficient software solutions.

BEST (Bringing Equipment Services Together) has continued to evolve in line with the ever-changing National Standards with recent enhancements for clinical decision-making tools, Personal Health Budgets, CSDS and Tariff / Price & Cost Analysis.

Since the launch of Version 14 and the new Browser based additions as well as electronic Referrals (including self-referrals) and our new Client Portal there has never been a better time to take a look at our system.

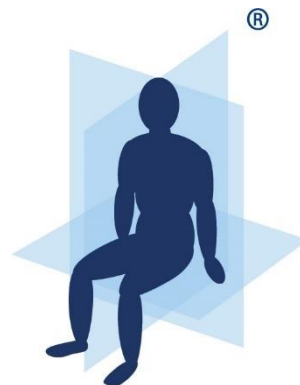
SPECIALISED ORTHOTIC SERVICES

Stand 24



Specialised Orthotic Services Ltd
Units 127-128 Fauld Industrial Park
Tutbury
Nr. Burton upon Trent
Staffordshire
DE13 9HS

01283 520400
enquiries@specialorthotic.com
www.specialisedorthoticservices.co.uk



Specialised
Orthotic
Services

By *drive*

Specialised Orthotic Services is an award-winning manufacturer of specialist postural and bespoke seating solutions. We work closely with individuals, clinicians, carers and service providers, combining experience and expertise to design products that deliver practical solutions to aid mobility and daily living for clients with complex postural needs.

SPEX

Stand 22

Spex Ltd
32 Detroit Drive,
Rolleston 7614
New Zealand

+64 3 307 9790
solutions@spexseating.com
www.spexseating.com



Commencing in 1990, Spex Seating has many years' experience in the design and manufacturing of wheelchair seating and positioning equipment. Our progressive technologies and developments provide comfort and positioning for people who use a wheelchair. Our mission is to improve and benefit the lives of these people. Distinguished by high standards of design and clinical evaluation, Spex Seating delivers an uncompromising seating choice packed with clever advantages. The experience of working with Spex Seating provides a blend of form and function.

STEALTH PRODUCTS BY QUANTUM REHAB

Stand 14



Stealth Products
32 Wedgwood Road
Bicester
Oxon
OX26 4UL



01869 324600
simon@stealth-products.co.uk
www.stealthproducts.com www.quantumrehab.co.uk

Stealth Products specialises in complex rehabilitation solutions. With innovative seating, positioning and accessories tailored to its users to enhance comfort and mobility for wheelchair users.

SUMED

Stand 9



Sumed International (UK) Ltd
Integrity House
Units 1-2, Graphite Way
Hadfield
Glossop
SK13 2BQ



+44 (0)1457 890980
sales@sumed.co.uk
sumedinternational.com

Sumed International, a leading provider of pressure ulcer prevention and mobility solutions, is proud to exhibit at PMG 2024. Featuring the Uniroll® wheelchair series, including the heavy-duty Goliath, Phonix, and Moly models, we offer tailored mobility solutions for diverse patient needs. Our advanced pressure relief cushions, such as the Integrity Static range, Systam Polyair®, and Action gel cushions, provide optimal comfort and protection. Experience real-time pressure mapping with our cutting-edge Foresite SS X4 system, enabling precise assessment and intervention. Visit our booth to explore how Sumed's evidence-based solutions improve patient outcomes and quality of life.

SUNRISE MEDICAL

Stand 34



Sunrise Medical
Thorns Road
Brierley Hill
Stourbridge
DY5 2LD



0845 605 6688
enquiries@sunmed.co.uk
sunrisemedical.co.uk

Improving people's lives is part of our DNA. Since 1983, we've pioneered the era of the high-performance wheelchair, challenged conventions and led innovation. Today, Sunrise Medical is one of the most globally well-known and recognisable industry leaders in the design, manufacture and distribution of mobility products.

TENDERCARE

Stand 2

Tendercare Ltd
Unit 10 Minster Court
Courtwick Lane
Littlehampton
BN17 7RN

01903 726161
info@tendercareltd.com
www.tendercareltd.com



Tendercare Ltd design and manufacture our own brand of special needs pushchairs and bespoke seating solutions. Additionally, we are the UK distributor for Thomas Hilfen's product range (including pushchairs and car seats) as well as a distributor of Kinetic Balance harnessing. In addition to showcasing our core product-range, we will be debuting our newest seat.

WINNCARE

Stand 15



Winncare
Unit 2
Bruntcliffe Avenue
Morley
LEEDS
LS27 0LL

0800 193 6030
askus@winncare.uk
www.winncare.uk



Winncare is a trusted manufacturer of specialist pressure area care products, supplying the healthcare sector across the UK and Europe. Part of a European healthcare organisation, our pioneering team of experienced engineers have developed a clinical product range, designed to deliver better outcomes for end users. Our mission is to provide transforming healthcare solutions for people with limited mobility and caregivers at risk of injury and we are delighted to be attending PMG 2024 with our range of pressure area care cushions.

If you would like to shape the future of wheelchair cushions, pop along to Stand 15.

